



SUSTAINABLE PRACTICES APPLIED IN THE MANAGEMENT OF PROTECTED NATURAL AREAS IN THE REPUBLIC OF MOLDOVA

Country team:

Dr., **Ala Donica** – Institute of Ecology and Geography; Moldova State University

Dr., **Aliona Miron** – “Orhei” National Park

Dr., **Viorica Paladi** – “Lower Prut” Natural Reserve

Elena Fedorencu – “Plaiul Fagului” Scientific Reserve

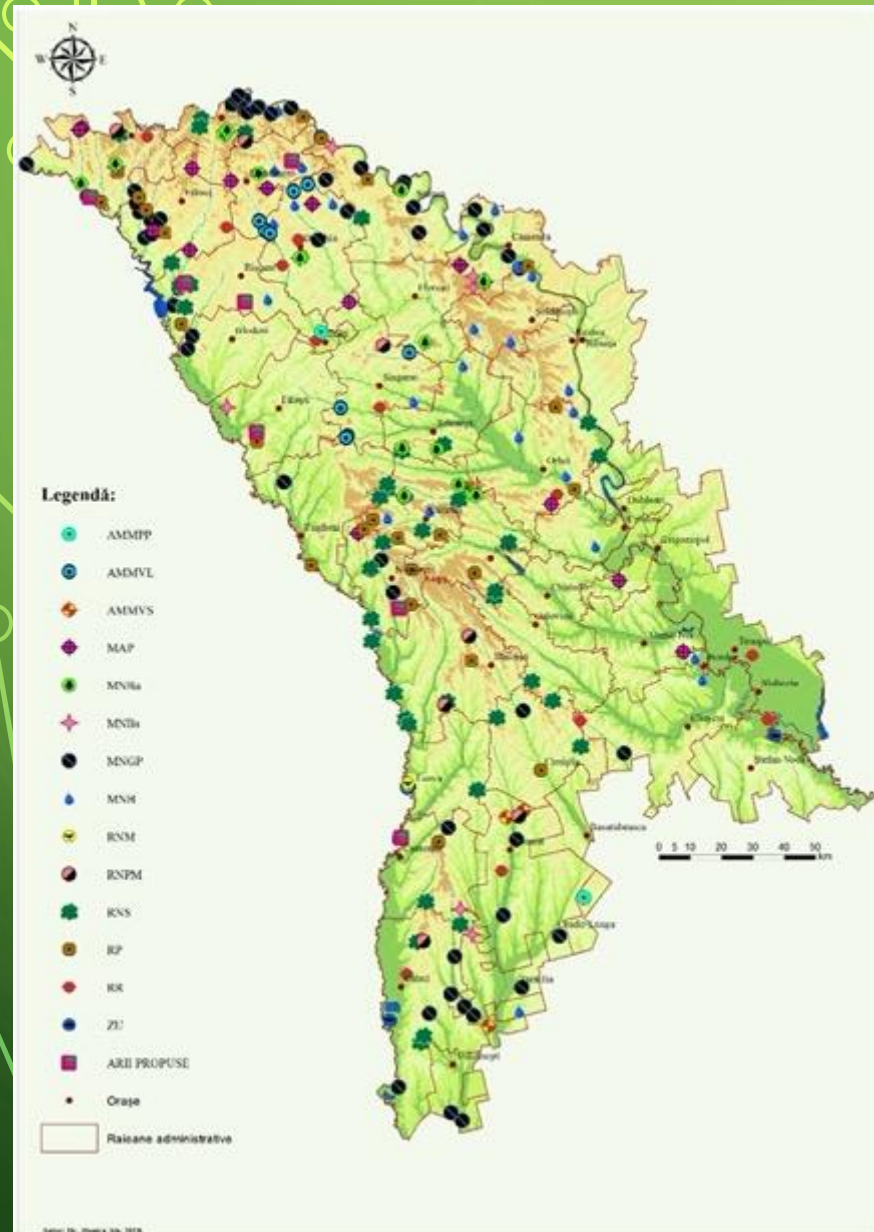
Serghei Balacci - Consultant, Nature Conservation and Biosecurity Policies Directorate
(Ministry of Environment)

REGIONAL WORKSHOP

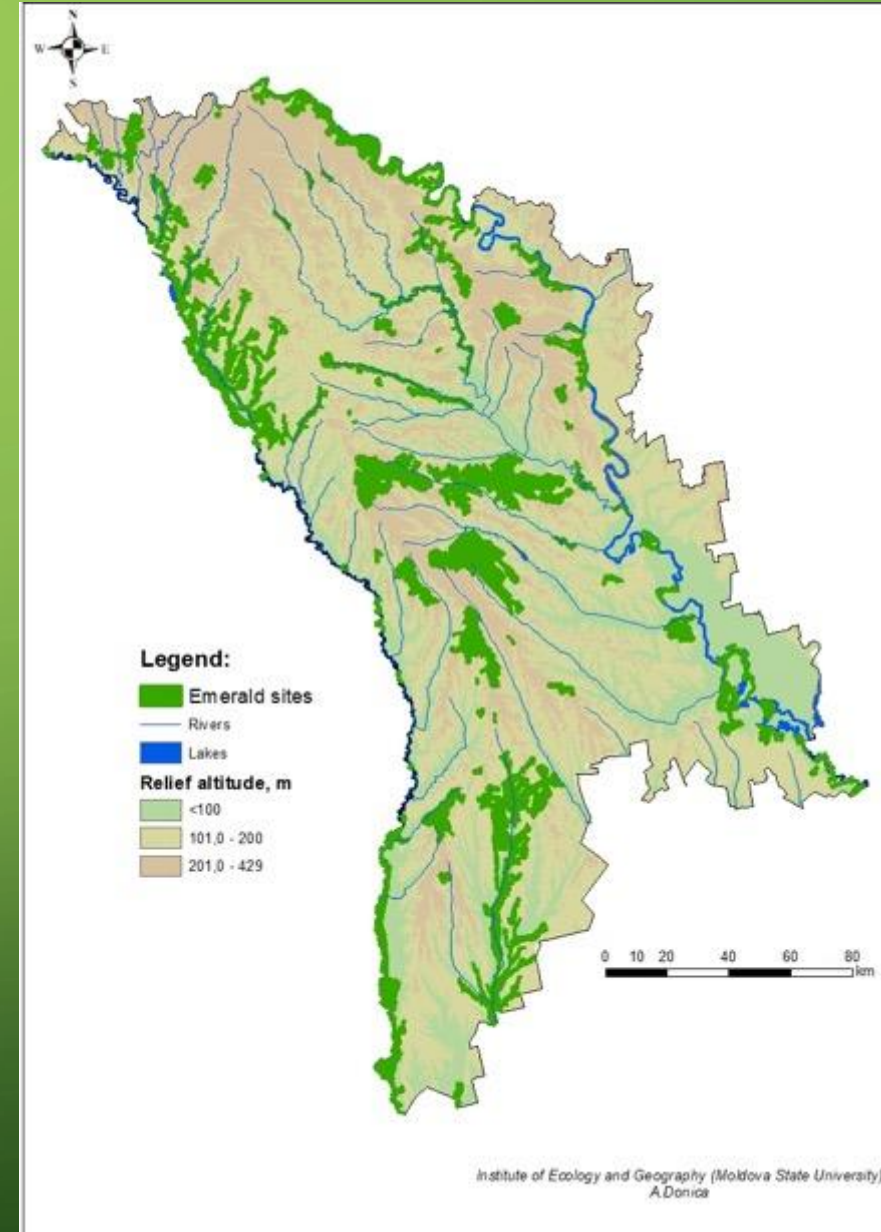
ENHANCING BIODIVERSITY PROTECTION IN THE EASTERN PARTNERSHIP COUNTRIES: LEARNING FROM EU BEST PRACTICES

DATE: 28-30 APRIL 2025

State Protected Natural Areas of Moldova (by categories, according to *Law No. 1538 of 25-02-1998 on the fund of state protected natural areas*)

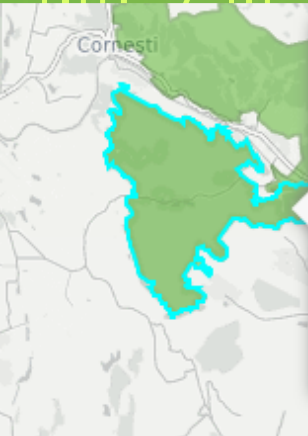


EMERALD NETWORK IN MOLDOVA (*LAW NO. 94 OF 04-05-2007 REGARDING THE ECOLOGICAL NETWORK*)



Emerald Network- General Viewer

<https://emerald.eea.europa.eu/>

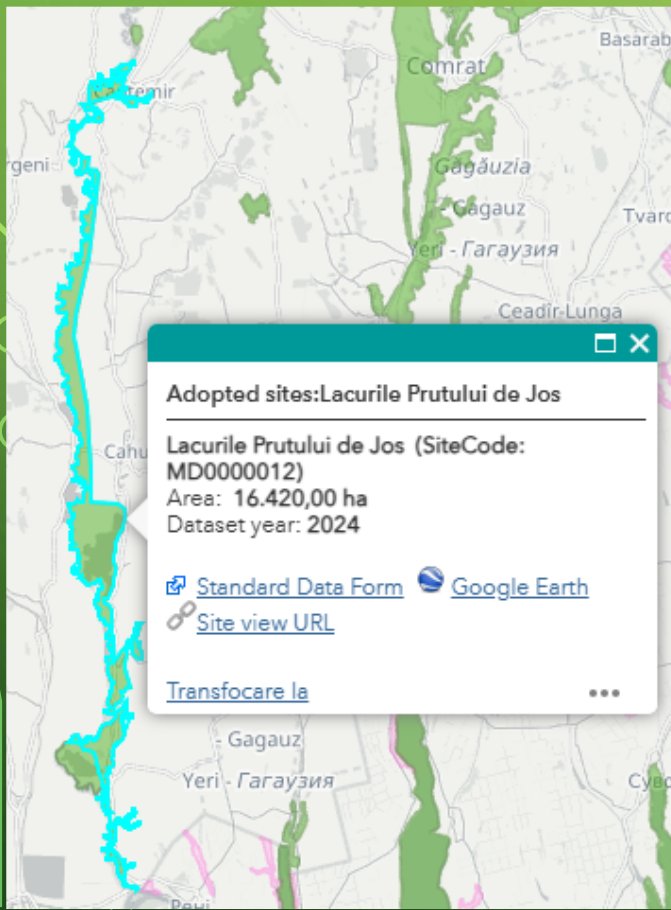


Adopted sites:Plaiul Fagului

Plaiul Fagului (SiteCode: MD0000003)
Area: 5.850,00 ha
Dataset year: 2024

[Standard Data Form](#) [Google Earth](#)
[Site view URL](#)

[Transfocare la](#) ...

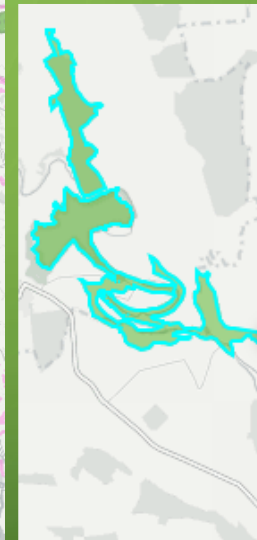
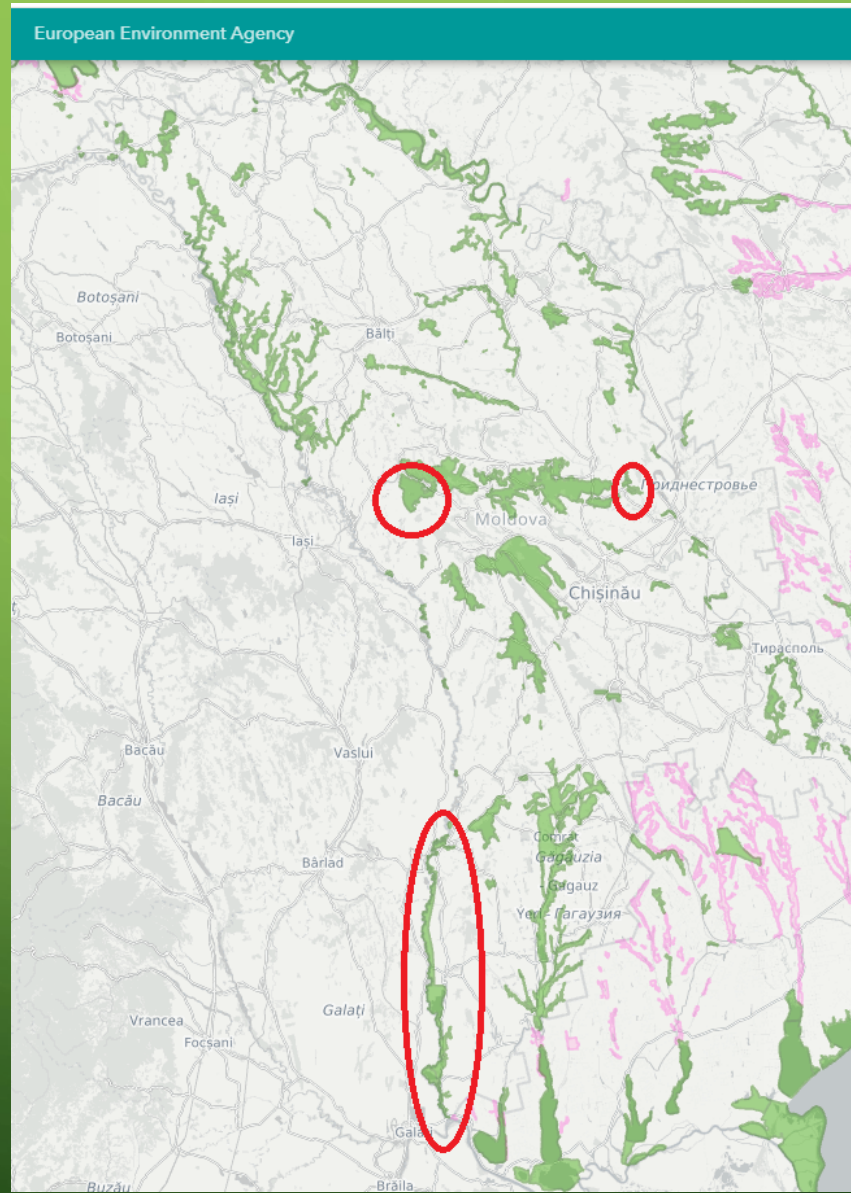


Adopted sites:Lacurile Prutului de Jos

Lacurile Prutului de Jos (SiteCode: MD0000012)
Area: 16.420,00 ha
Dataset year: 2024

[Standard Data Form](#) [Google Earth](#)
[Site view URL](#)

[Transfocare la](#) ...

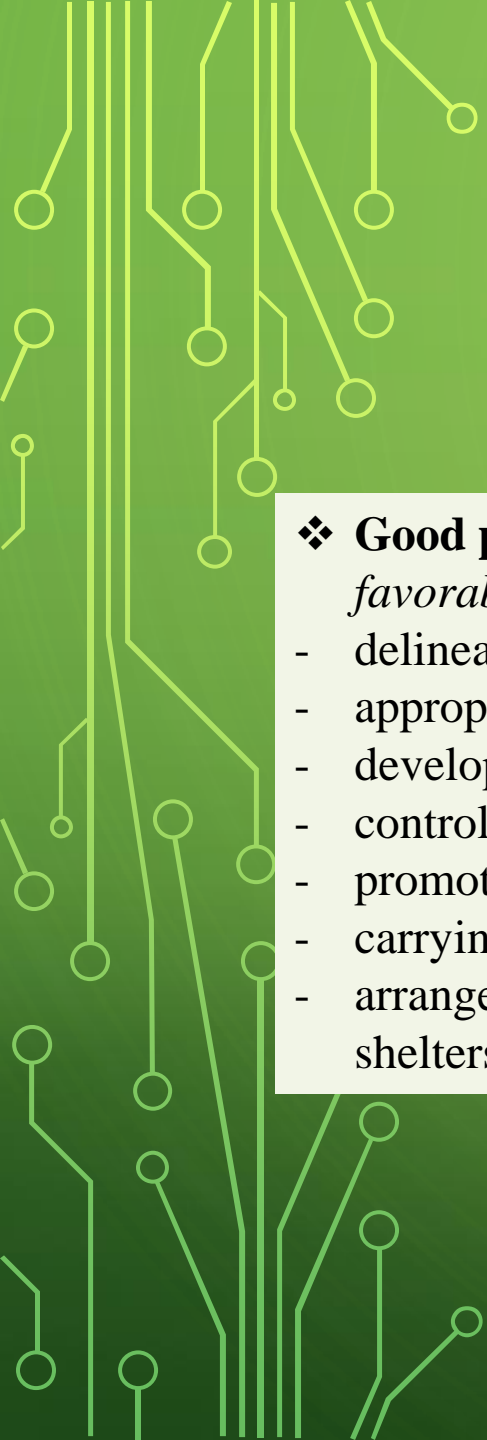


Adopted sites:Aria Naturala Protejata Trebujeni

Aria Naturala Protejata Trebujeni (SiteCode: MD0000040)
Area: 1.064,00 ha
Dataset year: 2024

[Standard Data Form](#) [Google Earth](#)
[Site view URL](#)

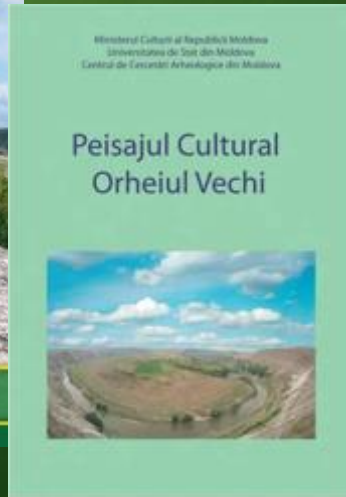
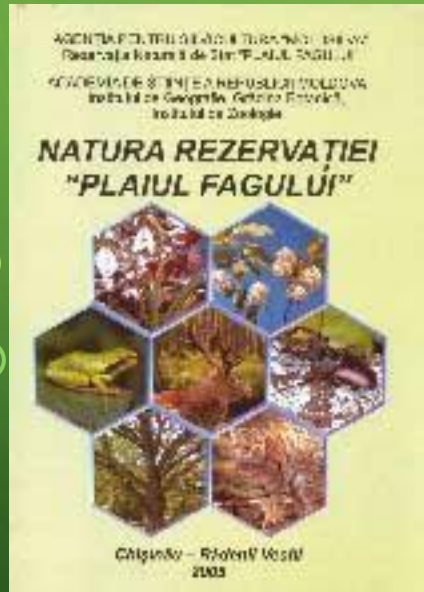
[Transfocare la](#) ...



Good practices in protected area management, biodiversity conservation and the promotion of nature, culture and people

❖ **Good practices that maintain/improve the level of environmental conservation and protection** (*ensure a favorable conservation status for habitats and species*):

- delineation of the protected natural areas boundaries,
- appropriate zoning of protected natural areas,
- development of systematic monitoring activities of species and habitats in protected natural areas,
- control of populations of species considered invasive,
- promotion of repopulation activities for species with reduced populations,
- carrying out ecological reconstruction activities of species habitats,
- arrangement of support infrastructures for wild flora and fauna species (for example, feeding infrastructures, shelters, nests, etc.).



Bird monitoring, bird ringing (2024)



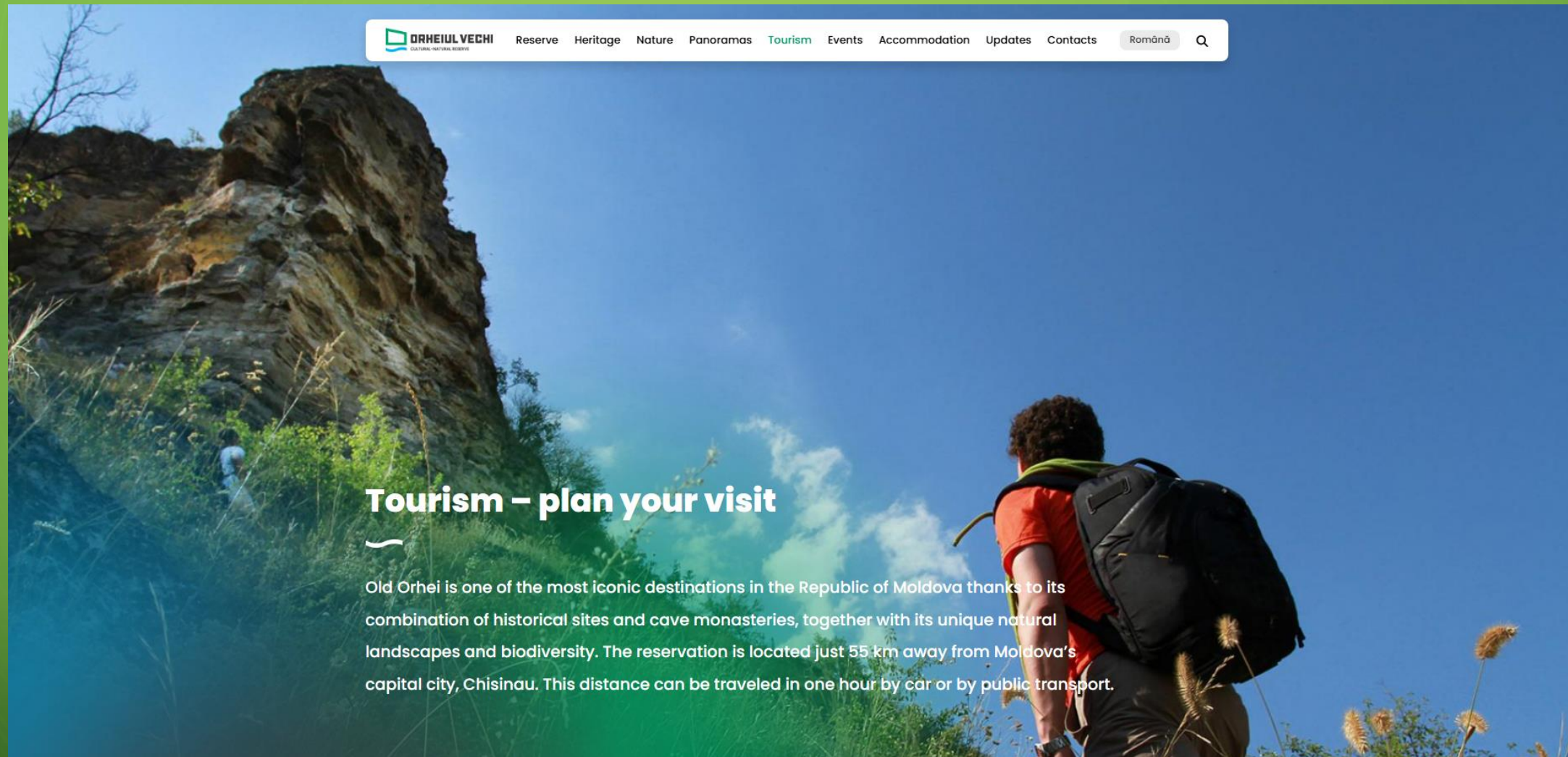
❖ **Good practices for enhancing the value of nature and culture through tourism and recreation in protected natural areas** (*oriented primarily towards the development of new economic opportunities for local communities and maintaining the sustainability of these activities*):

- organizing and diversifying tourist activities in parallel with the conservation of geo-diversity and biodiversity (e.g., thematic trails, water sports, climbing, cycling);
- developing visitor infrastructure (e.g., information-documentation centers, signage, rest areas, picnic areas, campsites, fireplaces, lookout points, observation points);
- linking tourist activities with traditional activities;
- developing support services for tourist activities (e.g., public catering facilities).



Promotion of local tourism





Tourism – plan your visit

Old Orhei is one of the most iconic destinations in the Republic of Moldova thanks to its combination of historical sites and cave monasteries, together with its unique natural landscapes and biodiversity. The reservation is located just 55 km away from Moldova's capital city, Chisinau. This distance can be traveled in one hour by car or by public transport.

<https://orheiulvechi.com/en/tourism/>



Reserve Heritage Nature Panoramas Tourism Events Accommodation Updates Contacts

Română

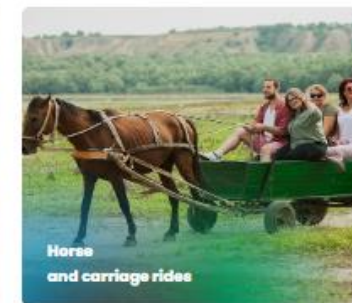
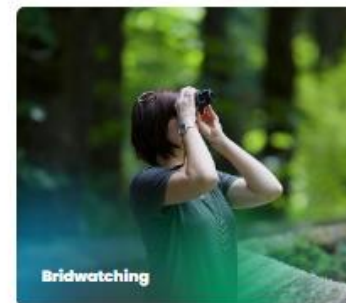


Old Orhei is
**a place full of history, legends, and natural
landscapes that will take your breath away.**

<https://orheiulvechi.com/en/>

Activities at Old Orhei

For the traveler and adventure looking to escape the bustle of the city and immerse into nature, we have prepared at Orheiul Vechi Reserve different kinds of activities and ways of enjoying your time here.



❖ **Good practices aimed at improving the management of the relationship with local communities in protected natural areas** (*ways to ensure sustainable coexistence between conservation and development objectives*):

- active involvement of human communities in the planning process of protected natural area (development of the management plan, regulations, other activities),
- organization and participation in events involving local communities (for example, protected area day, locality days, fest day),
- involving local communities in the management of the protected natural area (for example, as members of the management team, as volunteers in various activities).

Local action groups (LAW No. 50 of 09-04-2021 on local action groups) - non-profit, apolitical association, with legal entity status, created for the purpose of developing and implementing local development strategies within the **LEADER Program**, based on a territorial partnership established at local level between the public, entrepreneurial and civic sectors.

LAG Lunca Prutului de Jos

LAG Valea Culei



❖ **Good practices for improving the level of education of the interested public in protected natural areas**
(an increase in the information level, awareness, participation and effective involvement of the public)



Tree planting activities, territory sanitation, nest construction, bird rescue, etc.



